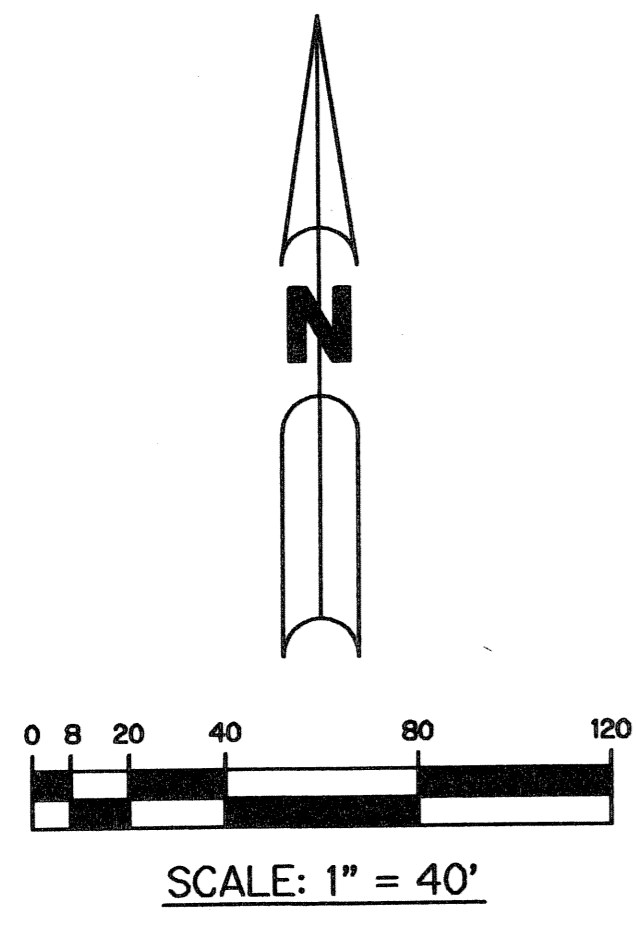
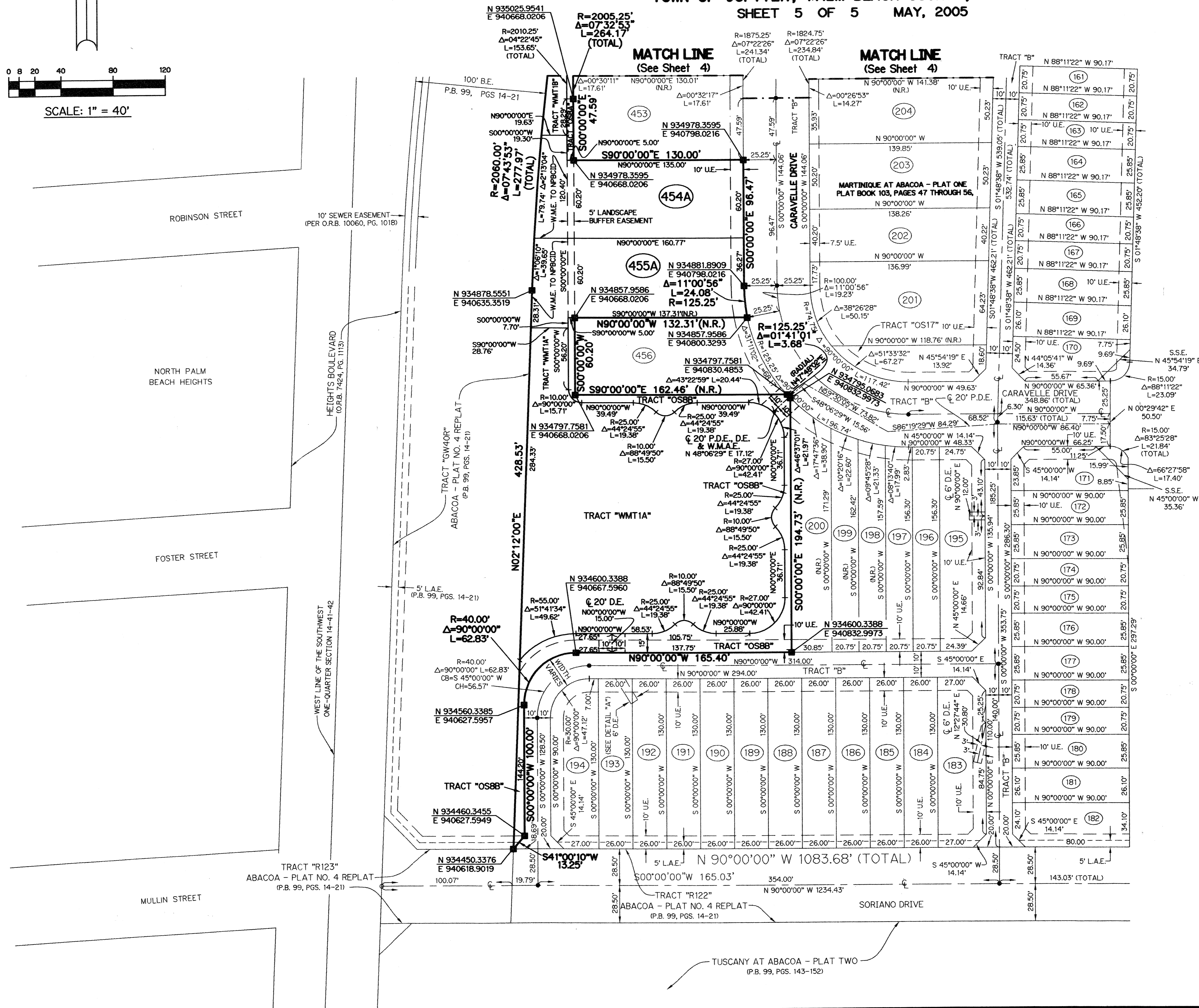


MARTINIQUE AT ABACOA REPLAT OF LOTS 440, 442, 443, 446, 454, 455, TRACTS 'WMT1', 'WMT2', 'WMT3', 'OS8' AND 'OS9'

BEING A REPLAT OF LOTS 440, 442, 443, 446, 454, 455, TRACTS "WMT1", "WMT2", "WMT3", "OS8" AND "OS9"
ACCORDING TO MARTINIQUE AT ABACOA - PLAT ONE AS RECORDED IN PLAT BOOK 103, PAGES 47 THROUGH 56,
OF THE PUBLIC RECORDS OF PALM BEACH COUNTY, FLORIDA, LYING IN
SECTION 14, TOWNSHIP 41 SOUTH, RANGE 42 EAST,
TOWN OF JUPITER, PALM BEACH COUNTY, FLORIDA
SHEET 5 OF 5 MAY, 2005



THIS INSTRUMENT PREPARED BY
DAVID L. SMITH, P.S.M. LS-4951, STATE OF FLORIDA
LAWSON, NOBLE AND WEBB, INC.
ENGINEERS PLANNERS SURVEYORS
420 COLUMBIA DRIVE, SUITE 110
WEST PALM BEACH, FLORIDA 33409
LB 6674



- LEGEND:**
- P.R.M. - PERMANENT REFERENCE MONUMENT
 - - SET PERMANENT CONTROL POINT, LB #6674
 - - SET PARKER KALON NAIL AND P.R.M. DISK LB #6674
 - - SET PERMANENT REFERENCE MONUMENT, LB #6674
 - - FOUND P.R.M. LB#6674
 - Δ - DELTA ANGLE
 - P.I. - POINT OF INTERSECTION
 - ⊕ - CENTERLINE
 - B.E. - BUFFER EASEMENT
 - D.B. - DEED BOOK
 - D.E. - DRAINAGE EASEMENT
 - L - ARC LENGTH
 - L.A.E. - LIMITED ACCESS EASEMENT
 - P.A.E. - PEDESTRIAN ACCESS EASEMENT
 - N.T.S. - NOT TO SCALE
 - O.R.B. - OFFICIAL RECORD BOOK
 - P.B. - PLAT BOOK
 - PGS. - PAGES
 - R - RADIUS
 - S.E. - SIDEWALK EASEMENT
 - U.E. - UTILITY EASEMENT
 - NPBCID - NORTHERN PALM BEACH COUNTY IMPROVEMENT DISTRICT
 - P.D.E. - PUBLIC DRAINAGE EASEMENT
 - (RAD) - RADIAL
 - CB - CHORD BEARING
 - CH - CHORD DISTANCE
 - S.S.E. - SAFE SIGHT EASEMENT
 - W.M.E. - WATER MANAGEMENT EASEMENT
 - W.M.A.E. - WATER MANAGEMENT ACCESS EASEMENT
 - S.T. - SURVEY TIE
 - (NR) - NON-RADIAL
 - (RF) - RADIAL TO FRONT LOT LINE
 - (RR) - RADIAL TO REAR LOT LINE
 - I.E. - INGRESS AND EGRESS EASEMENT
 - N 931379.1119
E 785294.7754 - DENOTES STATE PLANE COORDINATES

NOTE:

COORDINATES SHOWN ARE GRID COORDINATES
DATUM = NAD 83 (1990 ADJUSTMENT)
ZONE = FLORIDA EAST ZONE
LINEAR UNIT = U.S. SURVEY FEET
COORDINATE SYSTEM 1983 STATE PLANE
TRANSVERSE MERCATOR PROJECTION
ALL DISTANCES ARE GROUND
SCALE FACTOR = 1.000077
S 02°12'00" W (PLAT BEARING)
S 02°12'00" W (GRID BEARING)
00°00'02" = COUNTERCLOCKWISE
BEARING ROTATION, PLAT TO GRID

